

Facts About Manchester Pride Factsheet 2018

What can I do if I don't buy a wristband?

You can walk into the gay village through the gates and around the streets. Some bars will let you in and some won't.

Since at least 2013 there hasn't been a year when all bars refused entry. They love your money too much. You won't get into event areas on private property, such as the stage car-park arena, without a wristband.

No band has ever been required to get into the HIV/AIDS Vigil on Mondays. However in years gone by people were misled about that too and some paid.

The bottom line is that if you fancy a wander in the Village, aren't worried about the pop concert and aren't fussed about getting into specific venues then you don't need to buy a wristband. See page two about charity fundraising.

On 22 April 2015, the Local Government Ombudsman ruled that Manchester City Council had exceeded its powers in the wording of its Traffic Regulation Order for Manchester Pride 2014.

8. The Order said that pedestrians could access premises by displaying a valid wristband, accreditation, or a resident and visitor pass. This was fault, because the Council has no legal basis in which to restrict pedestrians from accessing premises. Therefore if someone wished to access a particular premise the organisers should have allowed access even if the person did not have a wristband, accreditation, or a resident and visitor pass.

The full ruling can be read here:
www.factsmcr.com/go/010



What has been said by the City Council and Police?

Fiona Worrall, Director of Neighbourhoods, Manchester City Council in a letter of 14 March 2018:

"As you are aware Manchester Pride has operated for a number of

years under the powers of a traffic order that restricts all vehicular traffic on certain roads. Pedestrians are allowed free and un-fettered access at all times. Wristbands are managed by the event organisers and are only to facilitate access to the bars and event spaces and are in no way related to access the public highways.

"If pedestrians wish to access any footways then they can freely do so.

"I can assure you that pedestrian access will be maintained to the public highway at all time.

"We have previously requested that if any incidents occur that individuals either contact us on the day or submit details to us and we will fully investigate what has occurred."



MANCHESTER
CITY COUNCIL

Gareth Parkin, Chief Inspector City Centre, Greater Manchester Police in a letter of 12 January 2016:

"With regard to the 2015 event, Inspector Spurgeon delivered a bespoke briefing to the Pride security teams who were deployed on the gates detailing what their responsibility and powers were, we certainly made it clear they could not restrict access and the approach was a simple appeal for people to purchase wristbands. However if they refused to do so access would not be restricted."



Sara Todd, Deputy Chief Executive, Manchester City Council, makes clear in a letter of 22 August 2018 that the Council informed the Police of reported incidents last year:

"With regards the Incident on Saturday 26th August 2017, this was received by Veronica Wong who followed this up on site and with the Pride Organisers. GMP were also notified of this and other incidents reported."



MANCHESTER
CITY COUNCIL

Report an incident during the weekend

The City Council has a member of staff on duty to take calls, texts and emails about access problems and investigate them on the spot. Contact: Veronica Wong. Phone or Text: 07771607341. Email: v.wong@manchester.gov.uk

Our website will have a Live Blog all weekend again:
FactsMCR.com

What about the fundraising?

Manchester Pride is calling it a “pledgebund” once again. But it’s a highly ineffective way to raise funds for causes.

Don’t feel guilty about not buying a band. We suggest you donate a couple of pounds to a charity that directs a higher percentage of income to causes.

Since 2003 this really has been about generating tens of millions for city businesses, driving tourism and providing a nice lifestyle for Village business owners and Pride employees (see below).

It was enabled using unlawful Traffic Orders which forced village goers to fund a tourism-friendly pop concert whether they wanted to go to it or not.

In the most recently published accounts, for year ending 31 December 2016, we can see that income was £1,601,385, with £149,000 announced for causes. That’s just 9.3% of income.

- How much “charity money” (including reserved and non-reserved funds) was *actually* distributed in each of 11/12, 12/13, and 13/14, if different from pledges made in the Trustees Annual Reports?

Financial Year	Balance B/F	Donation Pledge	Actual Distribution	Balance C/F
2011-12	0	52,000	52,000	0
2012-13	0	34,000	19,911	14,089
2013-14	14,089	54,000	47,200	20,889
2014-15	20,889	146,000	128,276	38,613
2015-16	38,613	149,000	TBC	TBC

“Since 2003, we have raised and distributed over £1.5 million,” says Pride. In 15 years they have given an amount that is less than their income in 2016.

It’s become clear that for years Pride has misled us about how much is actually raised in any particular year. Using its reserves in the bank, money has been added to or taken from the amount actually raised, to manipulate the announced total and sometime fend off criticism.

In 2013 there were rumours of a fundraising failure. Facts campaigners



raised the alarm with a protest outside Pride’s offices.

Manchester Pride announced a char-

ity fund of £34,000 and the Manchester Evening News told you that figure had been raised “this year”. That was “fake news”. The accounts show Pride made a loss of more than £16,000 in 2013.

Manchester Pride has admitted to campaigners that year after year it hasn’t given out the full announced charity total within 12 months. Even that pitiful £34,000 in 2013 wasn’t given out in full. Just £19,911 of it was distributed.

From the table you can see that by the end of 2015 the full announced total hadn’t been distributed for three years running. Leaving £38,613 still to be given. Meanwhile needy LGBT organisations were suffering cuts and austerity.

Manchester Pride has always loved tricky language. Look at the current Annual Review and you’ll see that Pride refers to £161,000 “for distribution”.

“As a result of our activities in 2017, this amount will be distributed in 2018,” it states. However you can see what “activities” Pride was getting up to with the money from 2012-2015.

We want to ensure that publicised totals never include money that was announced but not distributed in previous years.

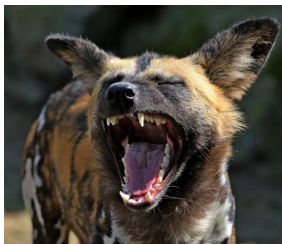
Pride’s 2016 accounts are here: www.factsmcr.com/go/033

An 18% earnings increase for Pride staff 2015-17

The accounts (see them at the Charity Commission site) show that wages, social security and other pension costs for the staff at the Manchester Pride “charity” were £160,399 in 2015 and £188,529 in 2017. An increase of about 18%.

Earnings for one member of staff increased above £60,000. No wonder CEO Mark Fletcher is always laughing his head off in photos.

In an earlier version of this fact-sheet we wrote that the earnings increase was 40%. That was wrong. The confusion arose because 2016 was a 15 month financial year for Pride.



Did you know?

STILL NO EXPLANATION

On 25 November 2002 a meeting was told that two methods could be used to close the streets but that a charge could not be made to enter. Despite this, just nine months later, they went ahead, closed off the gay village and charged.

At that meeting were all your favourites: Manchester City Council, an OBE from the LGF, GHT and of course Marketing Manchester (the tourist board). Why and how was that done?

GEORGE HOUSE TRUST MYSTERY

GHT’s audited accounts for 2015 and 2016 show the grants from Manchester Pride (25% of funds raised). We were tipped off that Pride failed to pay the annual grant to GHT in some years. We can’t find any money in GHT’s accounts in 2012, 2013 or 2014. We wrote

to GHT on 29 Aug 2017 to ask why no grants appear, but they didn’t reply.

JULIA GRANT GAYFEST RUMOUR

When Julia Grant left Manchester in 2002 a malicious rumour was started claiming she had “run off with all the 2001 GayFest money”. Facts campaigners obtained the accounts of the LGF, GHT and BodyPositiveNW and identified about 85% of the money in those. The remaining 15% or so was donated to small organisations that didn’t publish audited accounts or no longer exist.

GAY VILLAGE CRIME

The Police crime map for May 2018 shows around 80 reported violent and sexual crimes in the village area. The new (apparently delusional) “LGBT advisor” Carl Austin Behan describes it as a “safe haven” for LGBT. See the maps at police.uk. Search for M1 3HE.